

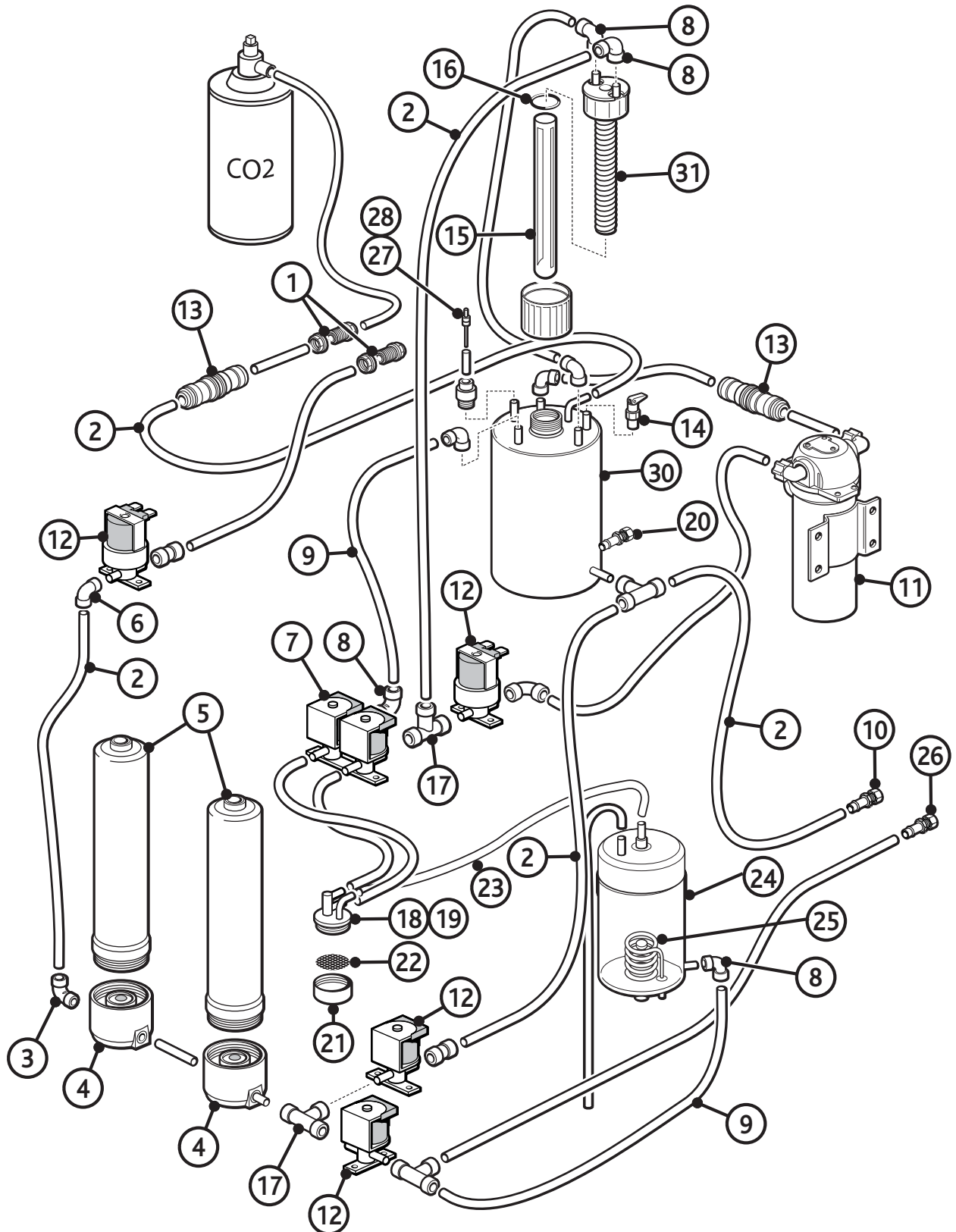


WETTED PARTS LIST - Hot, Cold and Sparkling

ITEM	PART NUMBER	DESCRIPTION
1	PU-4028	1/4" Bulkhead Fitting
2	PU-4031	1/4" PE Tube (Metre lengths)
3	PU-4066	1/4" Stem Elbow
4	Optional	Filter Head (optional)
*5	Optional	Filter (optional)
6	PU-4008	1/4" Equal Elbow
7	PU-4056	Solenoid Valve Double
8	PU-4007	5/16" & 1/4" Reducing Elbow
9	PU-4031	1/4" Tube
10	CT-2039	1/4" Drain Valve
11	CT-2035	Water Pressure Pump
12	PU-4016C	Solenoid Valve Single
13	PU-4057	Non-Return Valve
14	CT-2037	Pressure Release Valve
15	CT-2080	Quartz Sleeve
16	CT-2076	Sleeve O-Ring
17	PU-4011	1/4" Equal Tee
18	ST-8274	SS faucet Insert
19	PL-1313	Faucet (3 hole)
	PL-1345	Faucet water flow adjuster
20	PU-4140	JG End Stop 1/4" (PI4608S)
21	PL-1316	Faucet Nipple
22	ST-8275	Faucet Gauze
23	PU-4064	Silicon tube
24	HT-3036	Steel Open Type Hot Tank(Sensor)
25	N/A	Heater
26	CT-2039	1/4" Drain Valve
27	TBC	Level Probe
28	PU-4088KR	Level Sensor Sleeve
29	PU-4010	1/4" Straight Adapter
30	CT-2073	Sparkling Cold Tank
31	CT-2079	Quartz Spiral

**Customer specific*

WETTED PARTS ILLUSTRATION - Hot, Cold and Sparkling



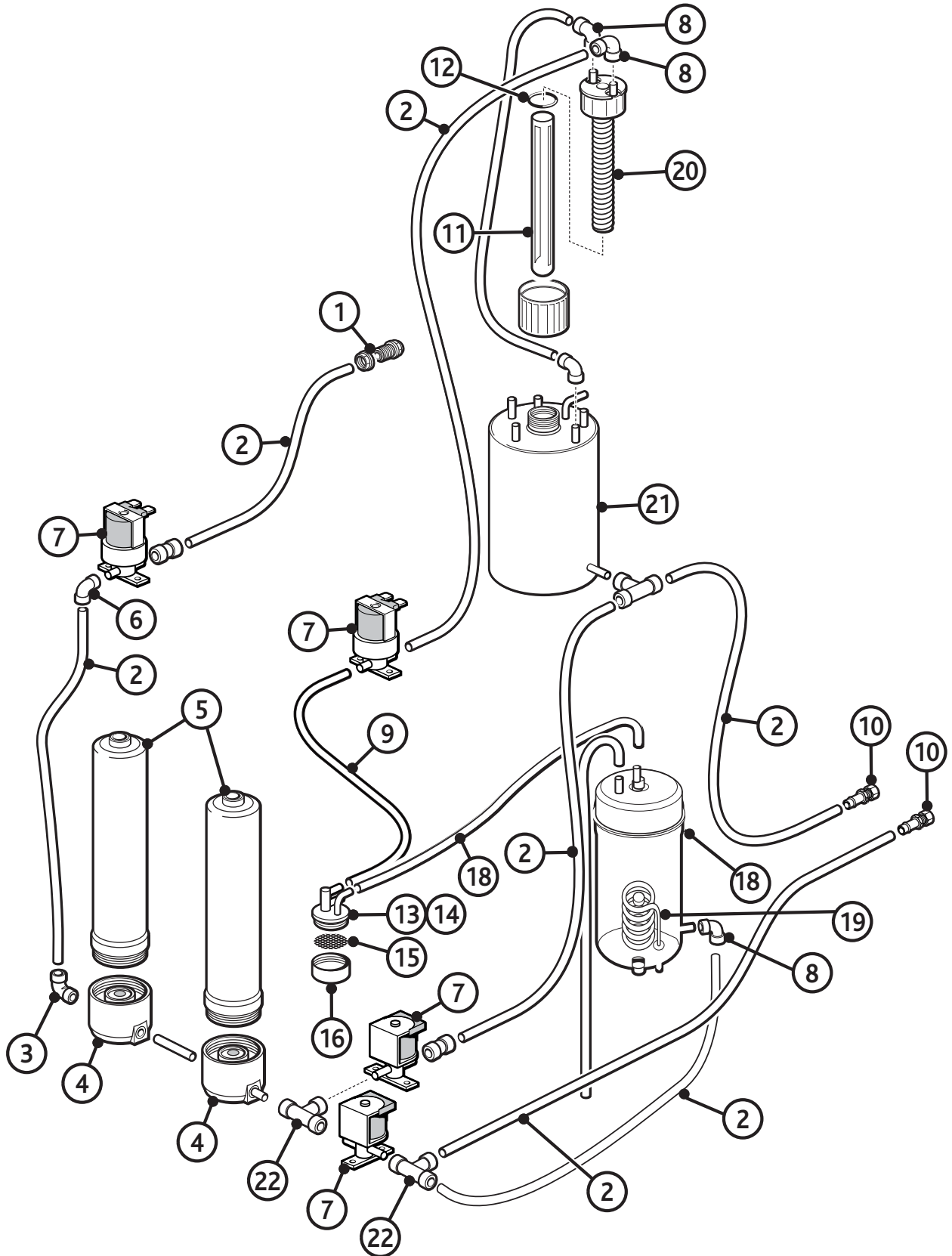


WETTED PARTS LIST - Hot and Cold

ITEM	PART NUMBER	DESCRIPTION
1	PU-4028	1/4" Bulkhead Fitting
2	PU-4031	1/4" PE Tube (Metre lengths)
3	PU-4066	1/4" Stem Elbow
4	Optional	Filter Head (optional)
*5	Optional	Filter (optional)
6	PU-4008	1/4" Equal Elbow
7	PU-4016C	Solenoid Valve Single
8	PU-4007	5/16" & 1/4" Reducing Elbow
9	PU-4039	5/16" Tube (Metre lengths)
10	CT-2039	1/4" Drain Valve
11	CT-2080	Quartz Sleeve
12	CT-2076	Sleeve O-Ring
13	ST-8274	SS Insert Faucet
14	PL-1313	Faucet 3 Hole
15	ST-8275	Faucet Gauze
16	PL-1316	Faucet Nipple
17	PU-4064	Silicon tube
18	HT-3036	Steel Open Type Hot Tank(Sensor)
19	N/A	Heater
20	CT-2079	Quartz Spiral
21	CT-2072	Cold Tank
22	PU-4011	1/4" Equal Tee

**Customer specific*

WETTED PARTS ILLUSTRATION - Hot and Cold





MAINS PARTS LIST

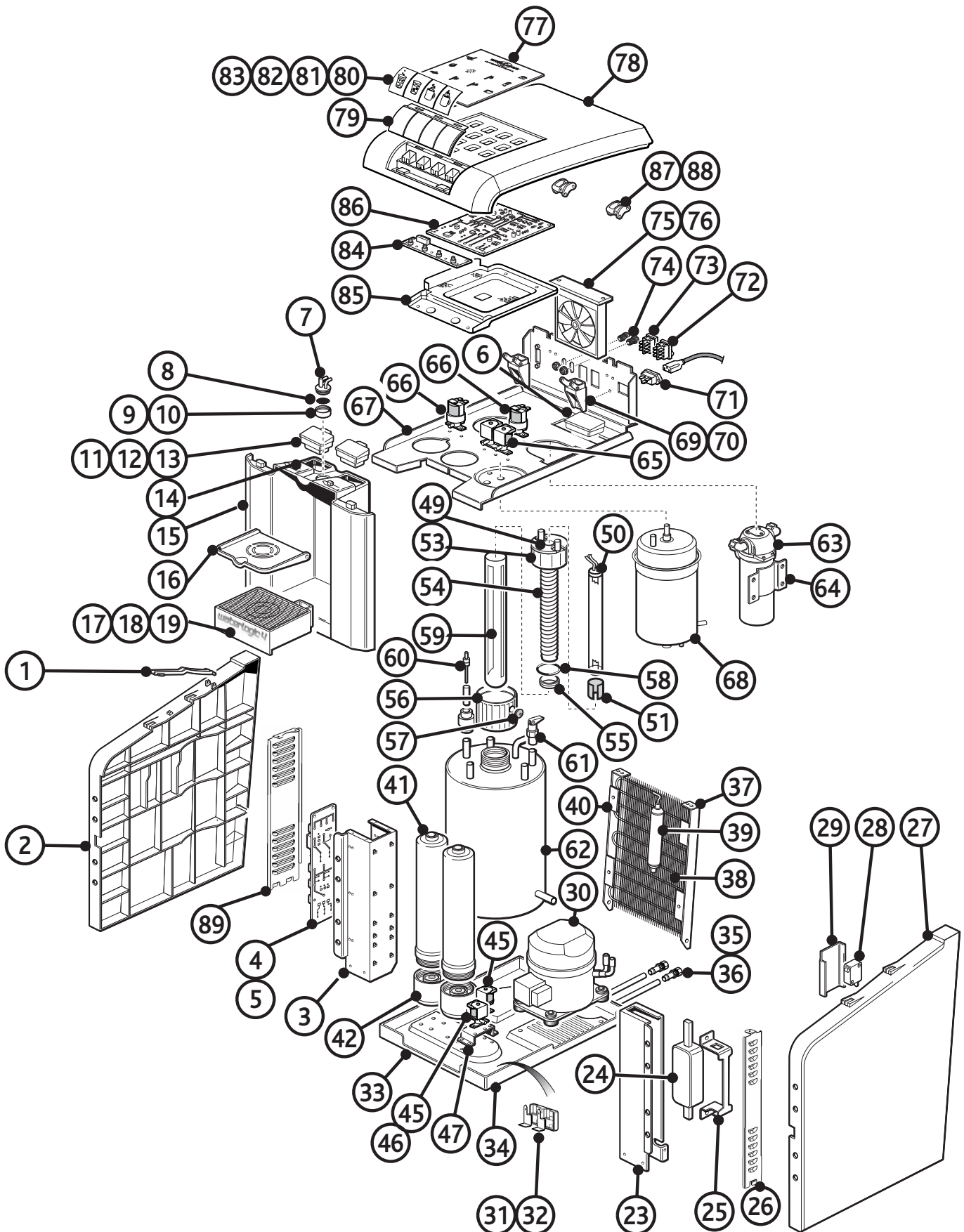
ITEM	PART NUMBER	DESCRIPTION
1	PL-1321	Top Cover Safety Support
2	PL-1328	Mini Side Panel (L)
3	ST-8260	PCB Holder Bracket
4	<i>EN-6059</i>	<i>Plastic PCB Support</i>
5	EN-6117	Main PCB
6	EN-6120	11W Ballast PCB 220V
7	ST-8274	Stainless Faucet Insert
8	ST-8275	Gauze
9	PL-1313	Faucet (3 Hole) (BioCote®)
10	PL-1316	Faucet Nipple (BioCote®)
11	PL-1335	LED PCB Holder Sealing Rubber
12	EN-6119	LED PCB
13	PL-1318	LED Hold Plate
14	PL-1317	Top Cover Lock
15	PL-1312	Front Upper Panel
16	PL-1344	2nd Drip Tray Grill
17	PL-1320	Drip Tray Grill (BioCote®)
18	PL-1319	Drip Tray (BioCote®)
19	ST-8267A/B	Drip Tray Sensor Pin L/R
20	<i>ST-8266</i>	<i>Drip Tray Sensor Holder</i>
21	<i>PU-4064</i>	<i>Silicon Tube 5/16" for Hot Water</i>
22	<i>CU-0055</i>	<i>Air Vent Clip</i>
23	ST-8261	Adaptor Holder Bracket
24	EL-5118	Power Adaptor (Transformer) 2A
25	ST-8264	Adaptor Fixing Bracket
26	ST-8284	Adaptor metal cover
27	PL-1327	Mini Side Panel (R)
28	EL-5027	Micro Door Lock Switch Only
29	PL-1329	Safety Micro Switch Cover
30	CO-9001	Compressor (R134a 1/8HP) 230V/50Hz Thermally Protected
31	PL-1311	Leak Detection Sensor Bracket
32	ST-8207CN	Leak Containment Tray Clip (Sensor 0.5mm)
33	ST-8258	Mini Down Base
34	<i>PL-1251CN</i>	<i>Unit Rubber Feet</i>
35	CT-2039	Drain Valve

ITEM	PART NUMBER	DESCRIPTION
36	CT-2028	Drain Valve Cap
37	ST-8256	Mini Front Support Frame (R)
38	CO-9041	Wire Condenser
39	CO-9008	Domestic Filter Dryer
40	ST-8255	Mini Front Support Frame (L)
41	Optional	Filter Head (optional)
42	Optional	Filter (optional)
43	<i>PU-4066</i>	<i>Elbow Connector 1/4"x1/4"</i>
44	<i>PU-4011</i>	<i>Equal Tee Connector 1/4"</i>
45	PU-4016C	Solenoid Valve DC 24V
46	<i>CU-0001</i>	<i>Cushion for Solenoid Valve</i>
47	ST-8263	Filter Solenoid Bracket
48	<i>PU-4010</i>	<i>Equal Straight Connector 1/4"</i>
49	<i>CT-2001-B</i>	<i>UV Lamp Fixing Rubber (Silicon)</i>
50	CT-2074	UV Lamp 11W Philips
51	CT-2075	UV Lamp Spacer Rubber to the Spiral Quartz Sleeve
52	<i>PU-4137</i>	<i>3/8"x1/4" Reducing Fitting</i>
53	CT-2078	UV Lamp Fixing Rubber
54	CT-2079	Ice Batch - Spiral Quartz Sleeve
55	PCT-2077	Spiral Quartz Spacer to Outer Quartz Sleeve
56	PL-1310	UV Lamp Retaining Nut
57	CT-2010	CDS Fitting Rubber
58	CT-2076	Quartz Sleeve O Ring
59	CT-2080	Ice Batch - Quartz Sleeve (Outer)
60	TBC	Water Level Probe for Sparkling Unit 145mm
61	CT-2037	Upper Safety Valver 1/4" for Sparkling Unit
62	CT-2073	Ice Bath - Sparkling Tank
63	CT-2035A	Water Pressure Pump (DC24V)
64	ST-8257	Pump Bracket
65	PU-4016	Solenoid Valve
66	PU-4016C	Solenoid Valve DC 24V
67	ST-8259	Mini Back Support Frame
68	HT-3036	Hot Tank 1.2L Sensor Type
69	PL-1330	Back Panel Hinge A-4

Items shown in italics are not shown

continued on page 42

WL4 MAINS PARTS ILLUSTRATION





WL4 MAINS PARTS LIST - *continued*

ITEM	PART NUMBER	DESCRIPTION
70	PL-1331	Back Panel Hinge A-1
71	EL-5016	Socket with EMI Filter
72	EL-5004	Switch - Power (Red)
73	EL-5005	Switch - Heater/Compressor (Green)
74	PU-4028	Bulkhead Connector Union 1/4"x1/4"
75	CT-2005	Fan Motor
76	ST-8265	Fan Bracket
77	PL-1337	LCD Cover Panel (WL Logo)
78	PL-1322	Top Cover
79	PL-1323	Button Panel
80	LP-7237	Cold Water Label
81	LP-7240	Sparkling Button Label
82	LP-7238	Hot Button Label
83	LP-7241	Extra Hot Button Label
84	EN-6118	Button PCB
85	PL-1334	PCB Cover
86	EN-6116	Display PCB
87	PL-1332	Back Panel Hinge A-2
88	PL-1333	Back Panel Hinge A-3
89	ST-8285	Main PCB metal cover

Items shown in italics are not shown

WL4 MAINS PARTS ILLUSTRATION

